

Terrace roof / upper structural design



Enquiry Ordering

Company stamp/signature: _____

Customer number: _____

Contact person: _____

Telephone: _____

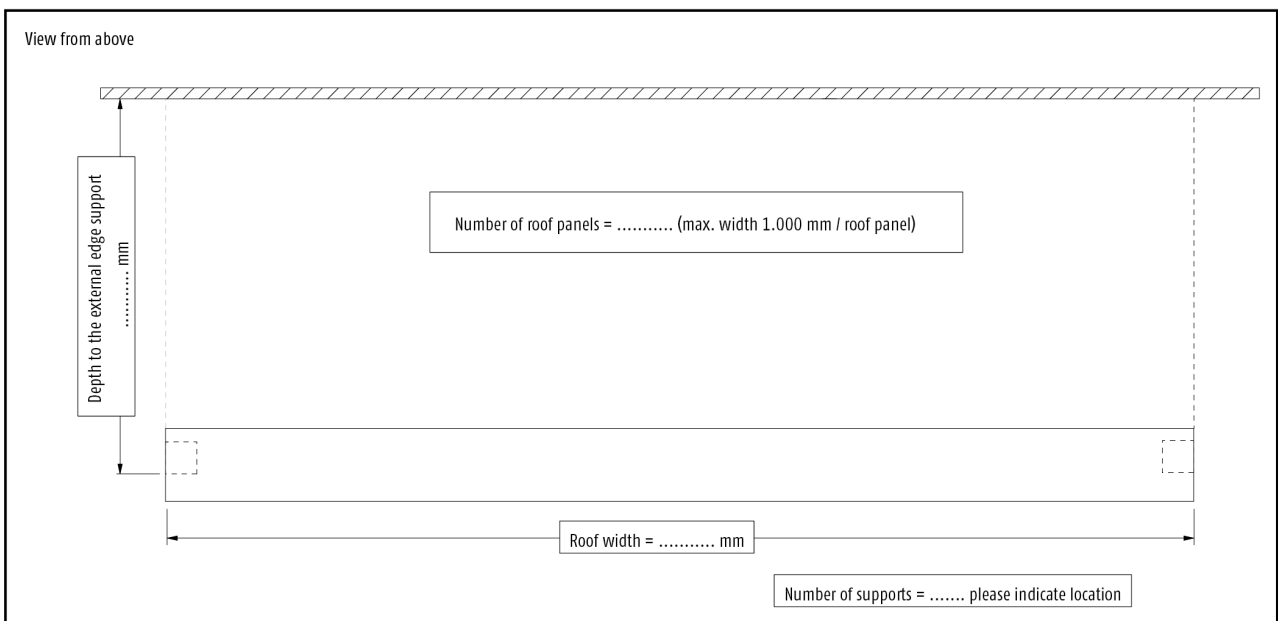
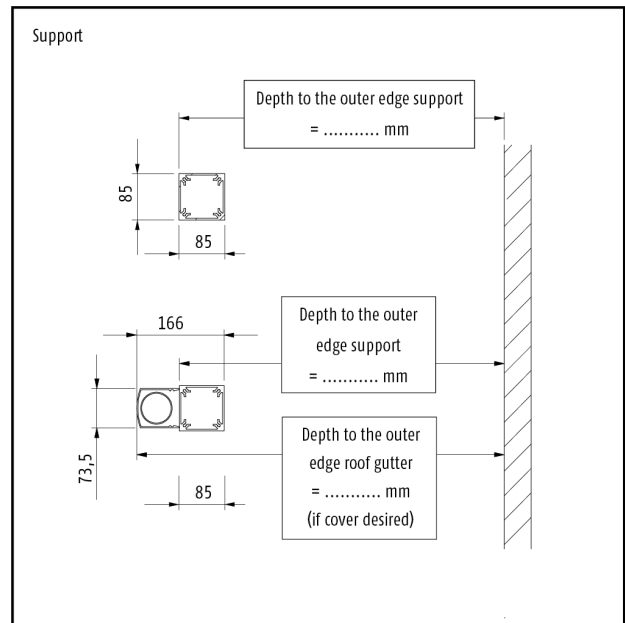
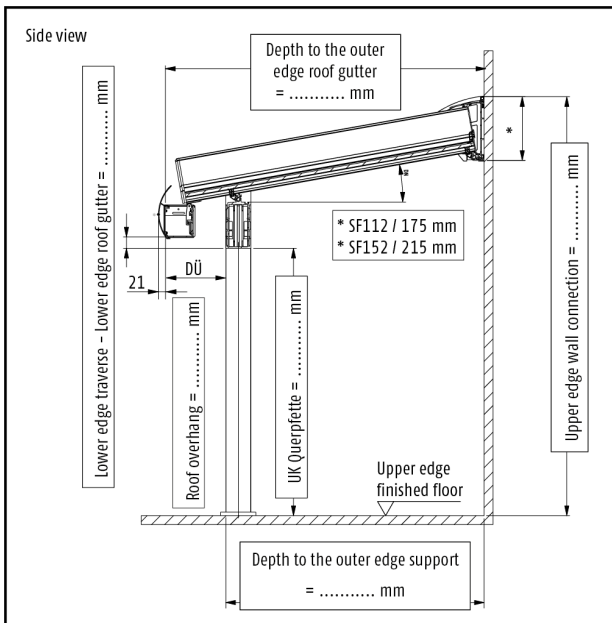
Offer number: _____

Commission: _____

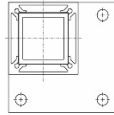
Postcode mounting location: _____

Standard snow load: 65 kg/m² 85 kg/m² 125 kg/m² 160 kg/m² 230 kg/m² 290 kg/m²
 350 kg/m²

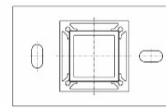
Roof overhang: without with (only with Plus variant) Length: _____ (min. 200 mm / max. 500 mm)



Support feet:



Amount _____



Amount _____

Ground level _____ mm

(for adaptation of the support length on the construction site)

Design gutter:

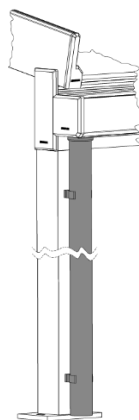
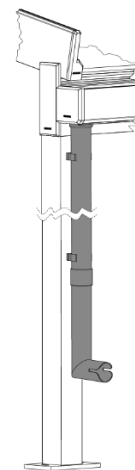
square

round

Drainage without roof overhang:

(A second downpipe is recommended for a roof surface area of 20 m² or more!)

 Set 1

 Set 2

 Set 3


Set 1 (Screw supports incl. seal, 90° spout, aluminium in roof colour)

Set 2 (Screw supports incl. seal, downpipe 2,500 mm, 2 clamp mounts, aluminium in roof colour)

Set 3 (Screw necks incl. seal, downpipe 2,500 mm, 87° pipe bend with outlet, 1 socket, 2 clamp mounts, aluminium in roof colour)

Aluminium covering panel in the roof colour for set 2 or 3

Cover panel also for supports without a downpipe

Position of drainage:

(External view)

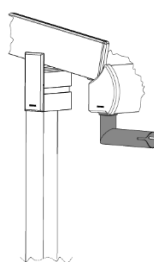
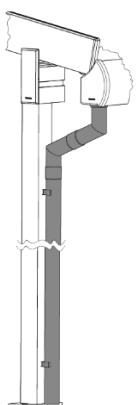
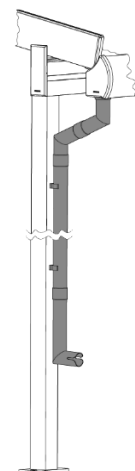
left

right

middle (only possible if there are 3 or more support)

Drainage with roof overhang:

(A second downpipe is recommended for a roof surface area of 20 m² or more!)

 Set 1

 Set 4

 Set 5


Set 1 (Screw supports incl. seal, 90° spout, aluminium in roof colour)

Set 4 (Screw necks incl. seal, 2 pipe bends 67° 420 x 200 mm, downpipe 2.500 mm, 2 clamp mounts, aluminium in roof colour)

Set 5 (Screw necks incl. sea, 2 pipe bends 67° 420 x 200 mm, downpipe 2.500 mm, pipe bend 87°, 2 clamp mount, 3 clutches, aluminium in roof colour)

Aluminium covering panel in the roof colour for set 2 or 3

Cover panel also for supports without a downpipe

Position of drainage:

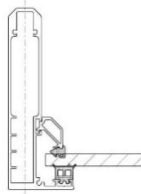
(External view)

left

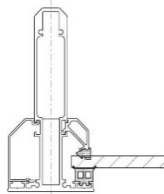
right

middle (only possible if there are 3 or more support)

Verge rafters:



(standard)



(required for shades below)

Skylight:

 left

 right

Glass dividing transom skylight:

 yes

 no

Glazing designed for:

 8 mm

 10 mm

 12 mm

Fillings/multi-skin sheets for:

 16 mm

 24 mm

Glazing bars for division of the glass:

 yes

 no

Colour:

 Pre-anodization

 RAL _____

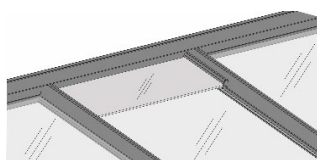
 Special colour: _____

Accessory:

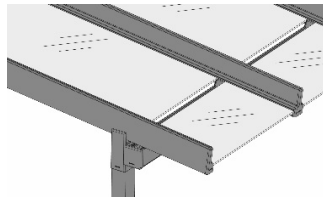
 part Adapter for external shading

 part Adapter for internal shading

Special equipment: Wall-side supports with wall-side purlin



Roof ventilation (price per roof field)



Dachlite (glass interruption per roof field at the overhang)

Lighting:

 LED spots

Number per rafter: _____

Number of rafters with spots: _____

 Light bar profile for rafters without spots

 LED stripes

Number of rafters with stripes: _____

 Light bar profile for rafters without stripes

 Dimm controller

 Cable duct wall connection

Substructure elements:

front:

 SF20
 SF42

 SF22
 SF45

 SF25

 SF30

 SF35

left:

 SF20
 SF42

 SF22
 SF45

 SF25

 SF30

 SF35

right:

 SF20
 SF42

 SF22
 SF45

 SF25

 SF30

 SF35

Please complete and send the corresponding system order form!

Please add layout or elevation sketches and notes! (Note: use external view!)